



L6210

DUAL SCHOTTKY DIODE BRIDGE

- MONOLITHIC ARRAY OF EIGHT SCHOTTKY DIODES
- HIGH EFFICIENCY
- 4A PEAK CURRENT
- LOW FORWARD VOLTAGE
- FAST RECOVERY TIME
- TWO SEPARATED DIODE BRIDGES

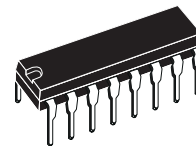
DESCRIPTION

The L6210 is a monolithic IC containing eight Schottky diodes arranged as two separated diode bridges.

This diodes connection makes this device versatile in many applications.

They are used particular in bipolar stepper motor applications, where high efficient operation, due to low forward voltage drop and fast reverse recovery time, are required.

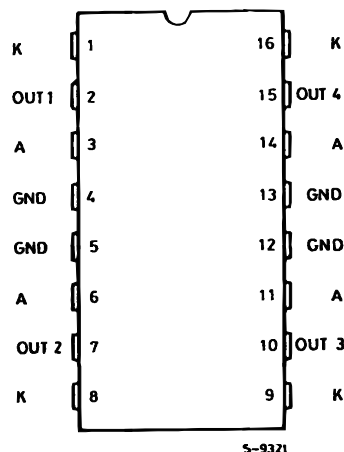
The L6210 is available in a 16 Pin Powerdip Package (12 + 2 + 2) designed for the 0 to 70°C ambient temperature range.



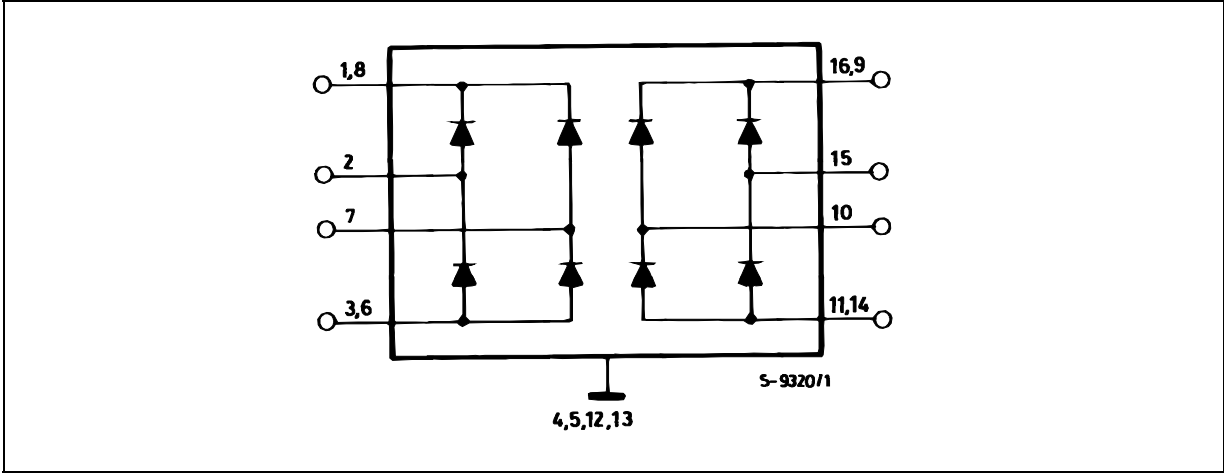
N
DIP16
(Plastic Package))

ORDERING NUMBER : L6210

PIN CONNECTION (top view)



BLOCK DIAGRAM



ABSOLUTE MAXIMUM RATINGS

Symbol	Parameter	Value	Unit
I_f	Repetitive Forward Current Peak	2	A
V_r	Peak Reverse Voltage (per diode)	50	V
T_{amb}	Operating Ambient Temperature	70	°C
T_{stg}	Storage Temperature Range	-55 to +150	°C

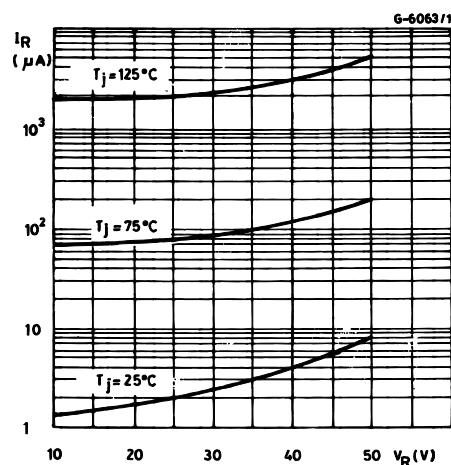
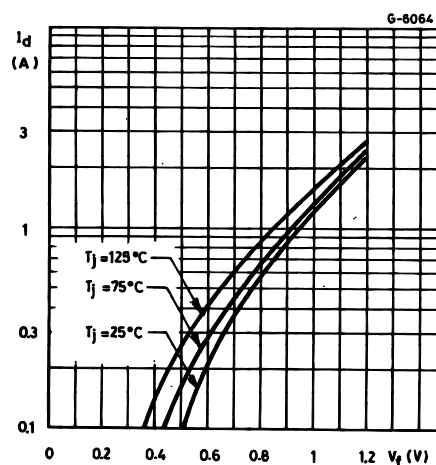
THERMAL DATA

Symbol	Parameter	Value	Unit
$R_{th\ j-case}$	Thermal Impedance Junction-case Max.	14	°C/W
$R_{th\ j-amb}$	Thermal Impedance Junction-ambient without External Heatsink Max.	65	°C/W

ELECTRICAL CHARACTERISTICS ($T_j = 25^\circ\text{C}$ unless otherwise specified)

Symbol	Parameter	Test Conditions	Min.	Typ.	Max.	Unit
V_f	Forward Voltage Drop	$I_f = 100\text{ mA}$		0.65	0.8	
		$i_f = 500\text{ mA}$		0.8	1	V
		$I_f = 1\text{ A}$		1	1.2	
I_L	Leakage Current	$V_R = 40\text{ V}, T_{amb} = 25^\circ\text{C}$			1	mA

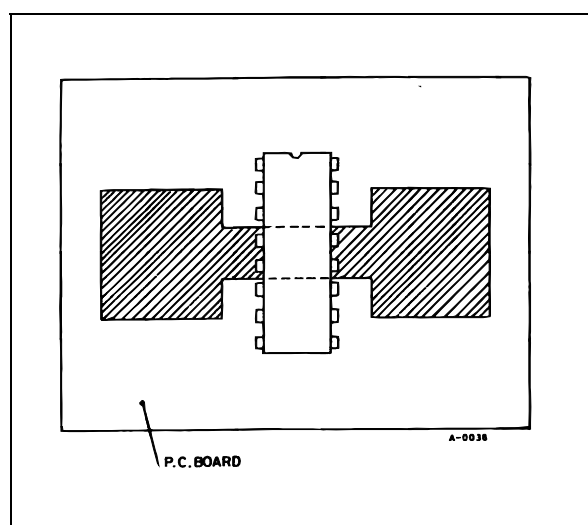
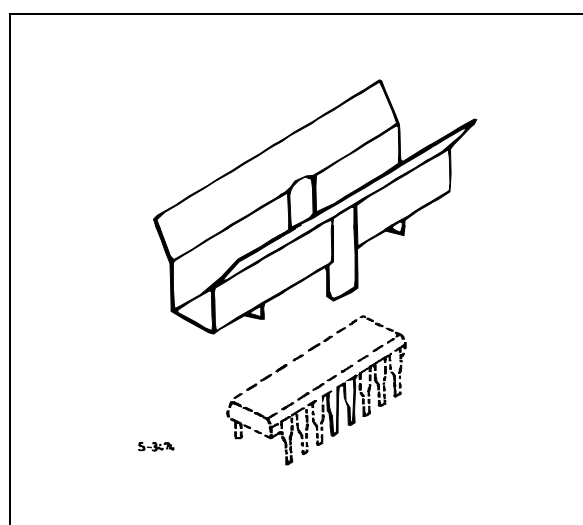
Note : At forward currents of greater than 1A, a parasitic current of approximately 10mA may be collected by adjacent diodes.

Figure 1 : Reverse Current versus Voltage**Figure 2 :** Forward Voltage versus Current

MOUNTING INSTRUCTIONS

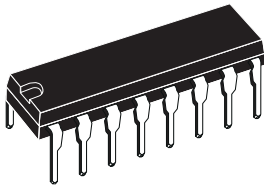
The $R_{th j-amb}$ of the L6210 can be reduced by soldering the GND pins to suitable copper area of the printed circuit boards as shown in figure 3 or to an external heatsink (figure 4). During soldering the pin

temperature must not exceed $260^\circ C$ and the soldering time must not be longer than 12s. The external heatsink or printed circuit copper area must be connected to electrical ground.

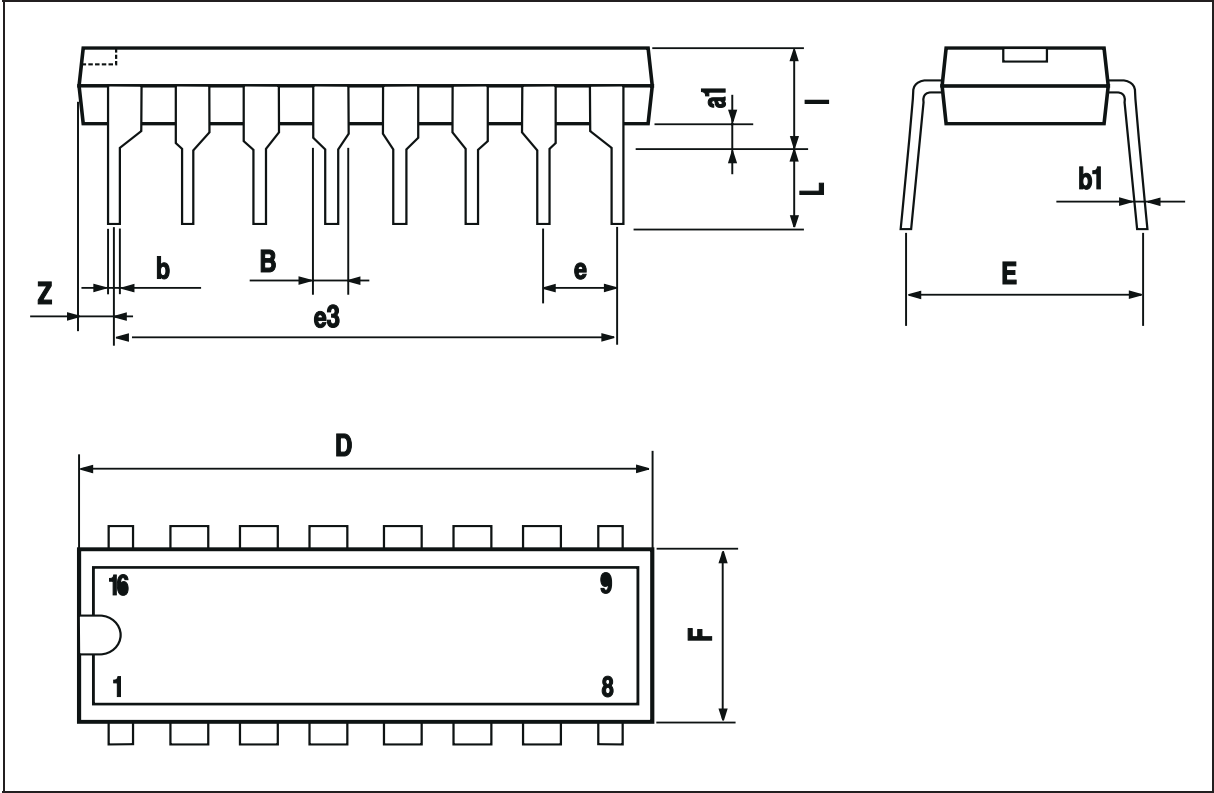
Figure 3 : Example of P.C. Board Copper Area which is used as Heatsink**Figure 4 :** Example of an External Heatsink

DIM.	mm			inch		
	MIN.	TYP.	MAX.	MIN.	TYP.	MAX.
a1	0.51			0.020		
B	0.85		1.40	0.033		0.055
b		0.50			0.020	
b1	0.38		0.50	0.015		0.020
D			20.0			0.787
E		8.80			0.346	
e		2.54			0.100	
e3		17.78			0.700	
F			7.10			0.280
I			5.10			0.201
L		3.30			0.130	
Z			1.27			0.050

**OUTLINE AND
MECHANICAL DATA**



Powerdip 16



Information furnished is believed to be accurate and reliable. However, STMicroelectronics assumes no responsibility for the consequences of use of such information nor for any infringement of patents or other rights of third parties which may result from its use. No license is granted by implication or otherwise under any patent or patent rights of STMicroelectronics. Specification mentioned in this publication are subject to change without notice. This publication supersedes and replaces all information previously supplied. STMicroelectronics products are not authorized for use as critical components in life support devices or systems without express written approval of STMicroelectronics.

The ST logo is a registered trademark of STMicroelectronics
© 2003 STMicroelectronics – Printed in Italy – All Rights Reserved
STMicroelectronics GROUP OF COMPANIES

Australia - Brazil - Canada - China - Finland - France - Germany - Hong Kong - India - Israel - Italy - Japan - Malaysia - Malta - Morocco -
Singapore - Spain - Sweden - Switzerland - United Kingdom - United States.

<http://www.st.com>